

Insulating Roof Blocks BV

Description

Insulating Roof Blocks BV are a range of insulating refractory blocks designed for use in suspended flat roofs. Each block comprises two sections of JM IFB, securely bonded with mortar and with an included stainless steel support plate. Each block is machined to precise tolerances on all faces.

Classification Temperature

JM 26: 1430 °C

JM 28: 1540 °C

JM 30: 1650 °C

Maximum Continuous Use Temperature

The maximum continuous use temperature depends on the application. Refer to our company for advice.

Applications

Insulating roof blocks are intended mainly for use as the shot-face layer in the roofs of furnaces, replacing classic arch roofs in tunnels and other kilns.

Features

• Good Thermal Insulation

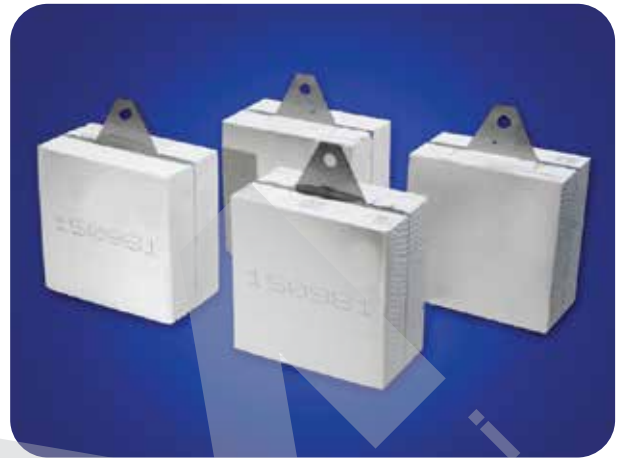
The light weight and low thermal conductivity of the JM IFB precursors allow for the construction of thinner roof insulation with reduced heat losses and hence lower operating costs.

• Low Thermal Mass

The light weight of the blocks means the heat absorbed by the furnace structure is greatly reduced, leading to lower fuel consumption, especially in intermittent and batch-firing kilns.

• Simplified Engineering

Flat roofs eliminate lateral stresses and allow for simpler and lighter supporting brick and steel-work. They also eliminate the need for special brick shapes, such as arches and wedges.



• Easy Installation

Flat roofs are much simpler and quicker to install than are traditional arches and do not need specialised brick-laying skills. They also lend themselves to modular pre-fabrication, further reducing on-site installation time and labour costs.

• Low Maintenance Costs

Roof repairs and block replacement can be carried out without necessarily shutting down the furnace, so reducing maintenance time and costs.

• Accurate Dimensions

Thermal Ceramics insulating roof blocks are manufactured to close dimensional tolerances, giving uniform construction with tight mortar-free joints.

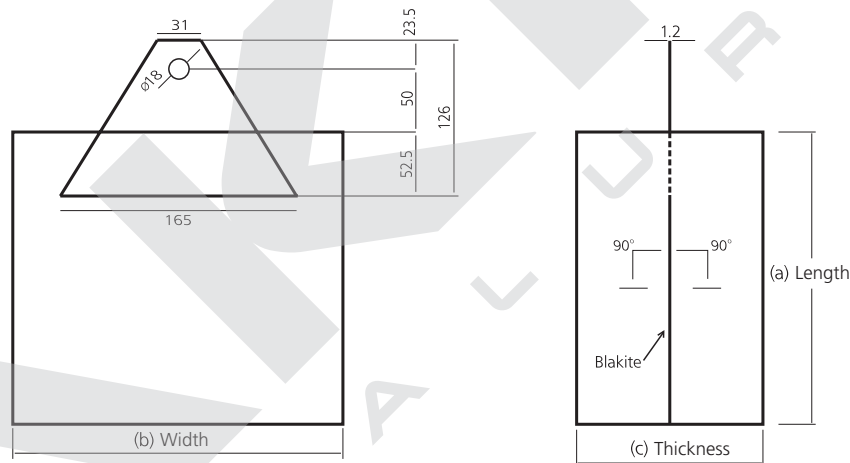
Insulating Roof Blocks BV

Main Properties	BV 26	BV 28	BV 30
IFB Precursor	JM26	JM28	JM30
Classification Temperature, °C	1430	1540	1650
Support Plate Steel	AISI 321	AISI 321	*
Plate Thickness, mm	1,2	1,2	1,2
Density, kg/m ³ (ASTM C-134)	800	890	1020
Modulus of Rupture, MPa (ASTM C-93)	1,5	1,8	2,1
Cold Crushing Strength, MPa (ASTM C-93)	1,6	2,1	2,2
Reversible Linear Thermal Expansion (Max), %	0,7	0,8	0,9

*Depends on the application.

Availability and Packaging

BV Insulating Roof Blocks are packed in cartons, on shrink film wrapped pallets.



Sizes are given in mm.

Quantity of Block per Pallet and Weight of a Block

axb(mm)	BV 26		BV 28		BV 30		c (mm)
	pcs/pallet	kg/pce	pcs/pallet	kg/pce	pcs/pallet	kg/pce	
230x230	160	5,5	160	6,4	160	7,4	130
230x230	120	6,7	120	7,5	120	8,5	154
250x250	128	6,7	128	7,5	128	8,5	130
305x230	120	7,5	120	8,5	120	9,5	130
305x230	90	8,9	90	10	90	11,4	154

In addition to the standard range, blocks of special dimensions can be supplied to a drawing, together with non-standard plate shapes and steel-grades (Inconel, DIN 4841, AISI 310).

The values given herein are typical average values obtained in accordance with standard test methods and subject to normal manufacturing variations. They are supplied as technical data and may change without notice. Contact our company to obtain detailed information.