

Maftec Blanket

Type: Refractory fibre blanket.

Description

Maftec Blanket is made from pure mullite fibre only, needled on both sides, and contains no binder or other added constituent. It can be used at continuous operating temperatures up to 1600°C, under oxidizing, neutral or slightly gas-rich conditions, retaining its original toughness, strength and soft, fibrous structure after extended use at this temperature.

Maftec Blanket is more resistant to acid and alkaline solutions than conventional alumina-silicate fibre blankets.

Being virtually free of shot, it has exceptionally good thermal insulation characteristics.

Maximum Continuous Use Temperature: 1600 °C

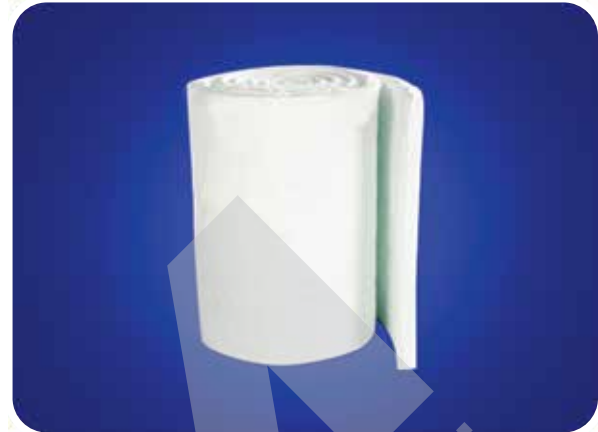
The maximum continuous use temperature depends on the application. Refer to our company for advice.

Features

- Because of its microcrystalline structure, Maftec Blanket is suited for continuous operation at 1600°C.
- Very low thermal conductivity.
- Very low shrinkage at 1600°C.
- Resistant to thermal shock.
- Good sound absorption.
- Maftec Blanket is ideal for the manufacturing of modular blocks because it remains soft up to 1600°C.
- Chemically stable and free of corrosive agents.
- Low heat storage.
- High strength makes it easy to handle and prevents tearing or punching around anchors.

Applications

- Furnace and kiln lining (heat treatment, ceramic fast firing, petroleum and chemical).
- High temperature gaskets.
- Furnace door seals.
- High temperature filter media.



Main Properties (23 °C/50% RH)		
Colour	White	
Classification Temperature, °C	1600	
Density, kg/m ³	96	128
Chemical Composition, %		
SiO ₂	28	
Al ₂ O ₃	72	
Fe ₂ O ₃	0.03	
TiO ₂	0.01	
CaO+MgO	Traces	
NaO+K ₂ O	0.06	
Thermal Conductivity, W/m.K		
400 °C	0.08	0.08
500 °C	0.10	0.09
600 °C	0.13	0.12
700 °C	0.17	0.14
800 °C	0.19	0.17
900 °C	0.23	0.20
1000 °C	0.27	0.24
1200 °C	0.39	0.33
1400 °C	0.58	0.48
Specific Heat Capacity at 1090 °C, kJ/kg.K	1.25	
Tensile Strenght KPa (NF-B-40-454)	93	103
Permanent linear shrinkage after 24 hours isothermal heating at, %		
1300 °C	0.3	
1600 °C	1.0	

Availability and Packaging

Blankets are packed in cartons, on pallets wrapped in stretchable film.

Thick (mm)	Density (kg/m ³)		Length (mm)	Width (mm)	Blankets/ Carton	m ² /Carton
	96	128				
6	x	o	3600	610	12	26.35
12.5	x	x	3600	610	6	13.17
25	x	x	3600	610	3	6.58

The values given herein are typical average values obtained in accordance with standard test methods and subject to normal manufacturing variations. They are supplied as technical data and may change without notice. Contact our company to obtain detailed information.